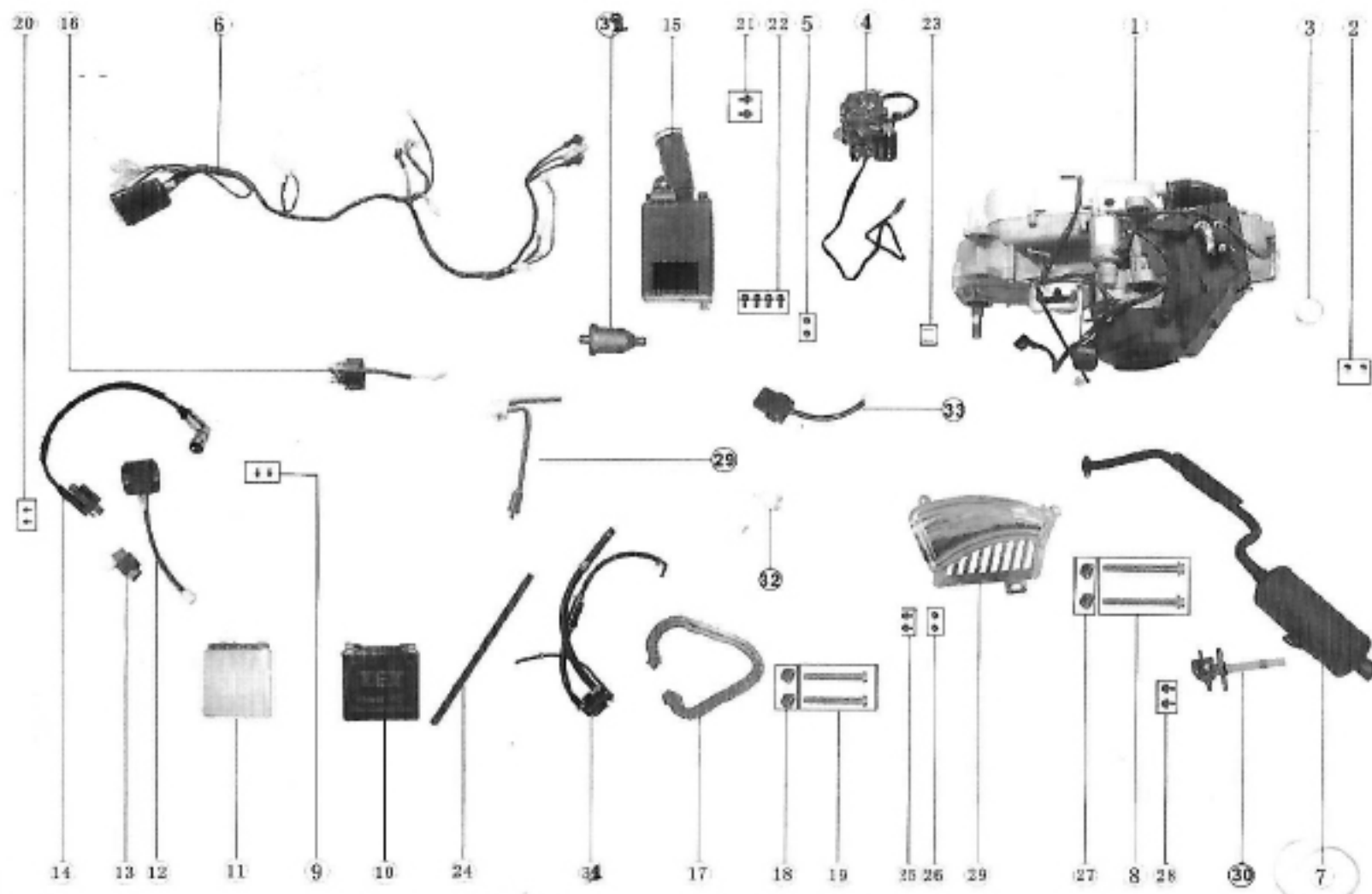
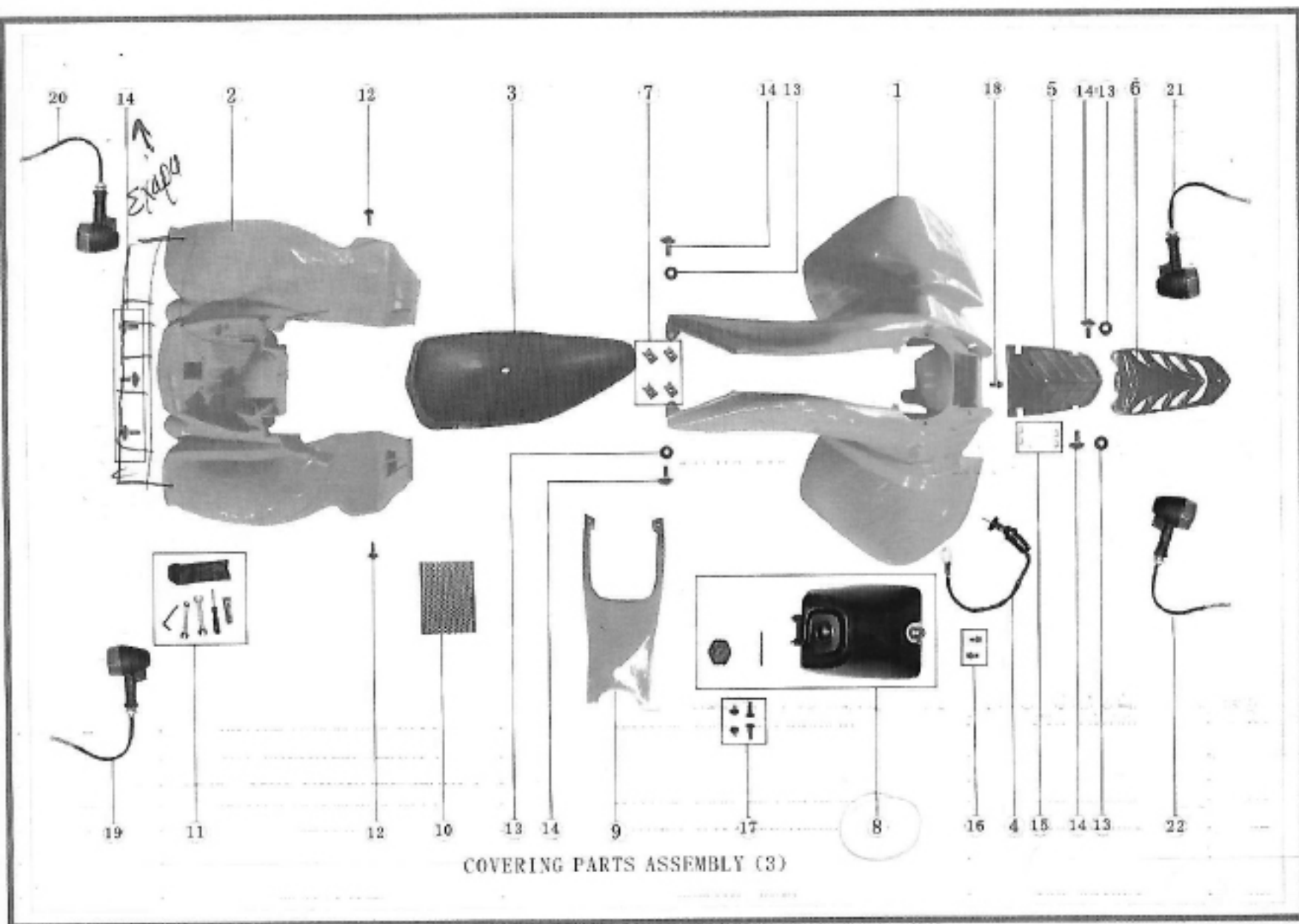
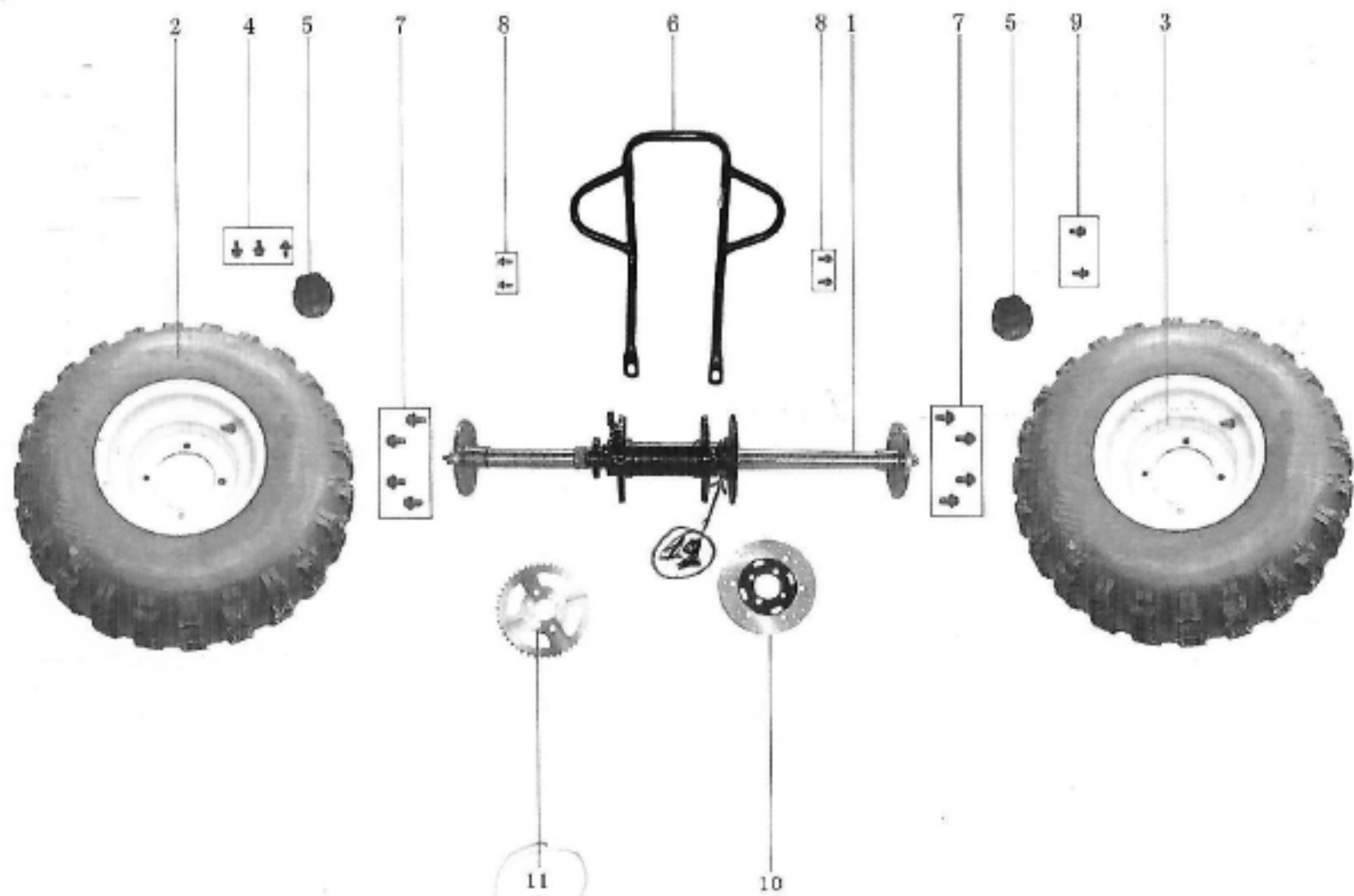


FRAME ASSEMBLY (1)

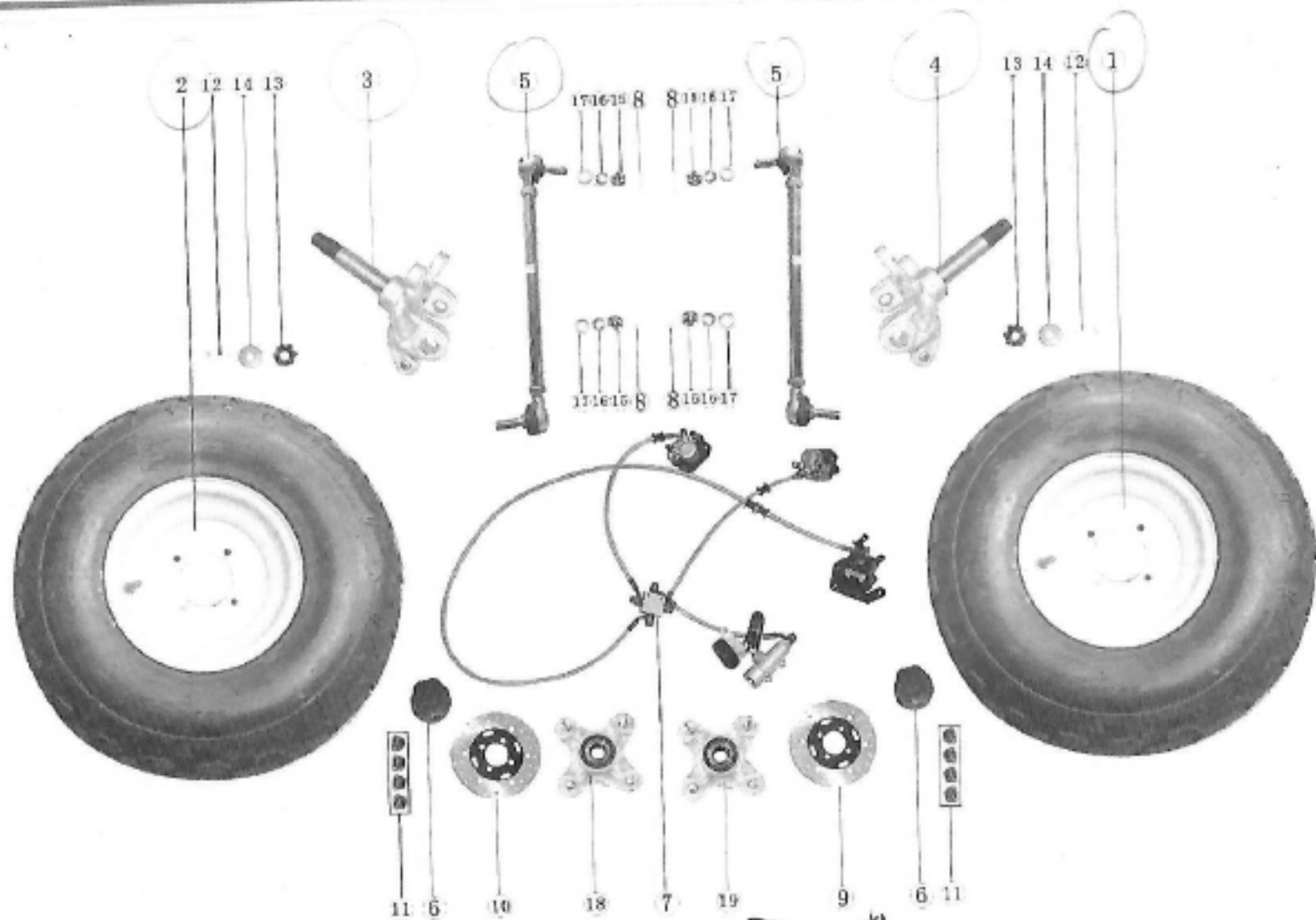


ENGINE & WIRING ASSEMBLY (2)

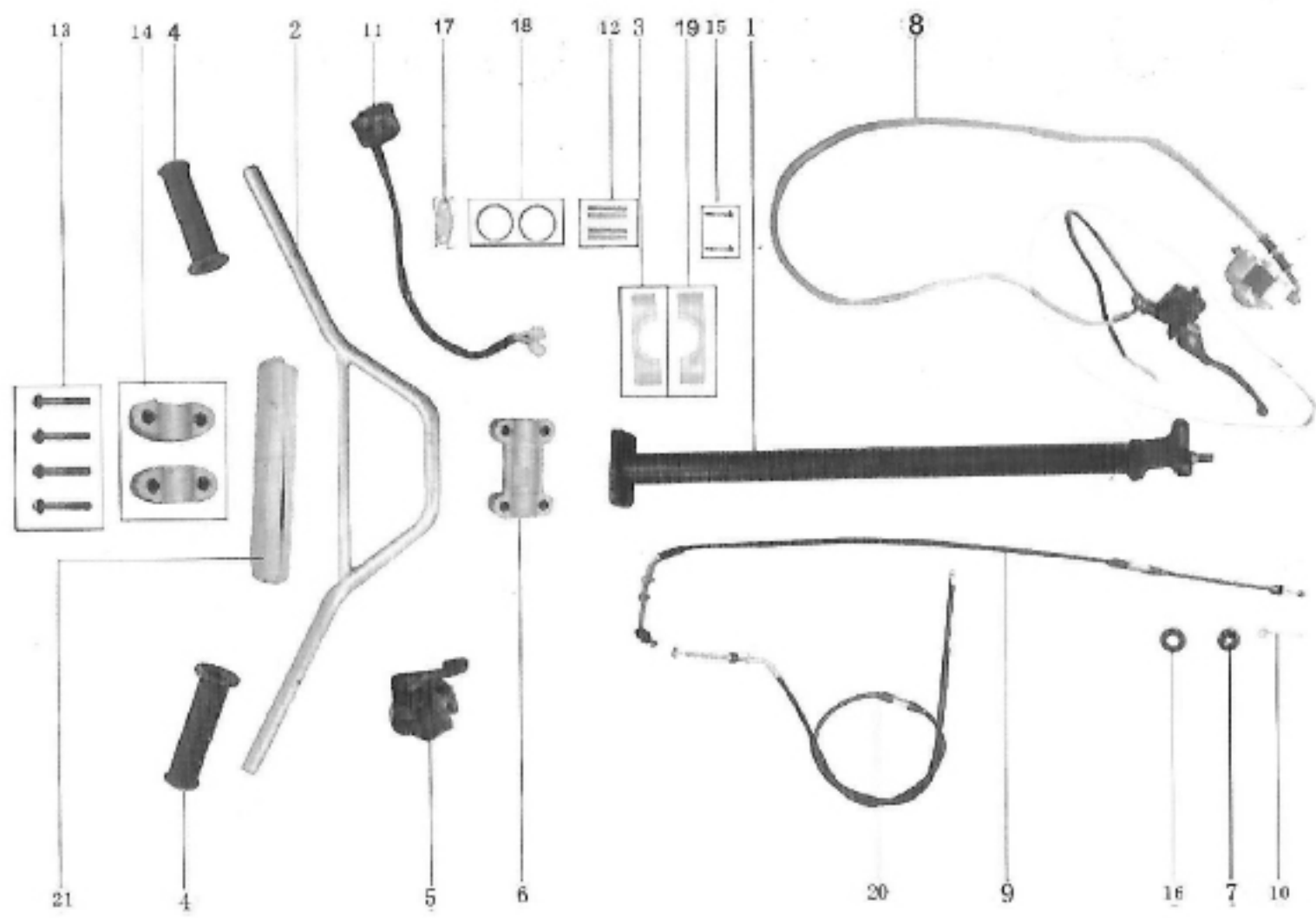




REAR WHEEL ASSEMBLY (4)



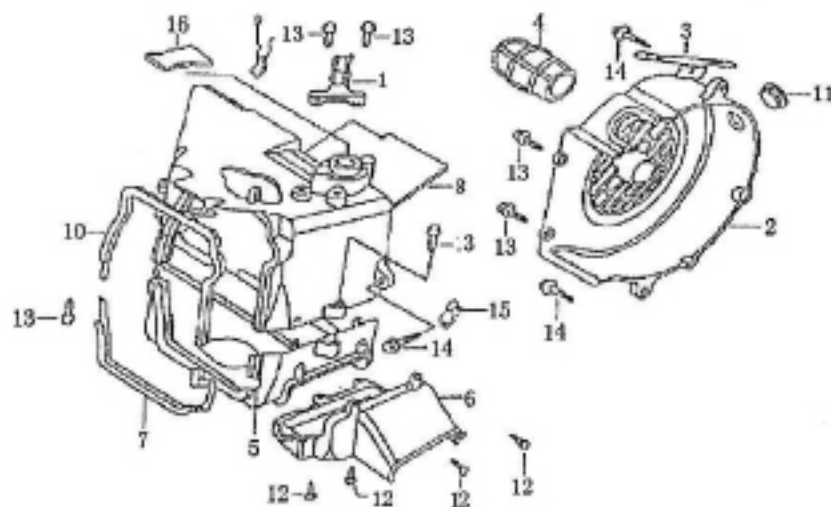
FRONT WHEEL ASSEMBLY (5) 213010-001



FRONT FORK ASSEMBLY (6)

CK150S-3H后桥爆炸图

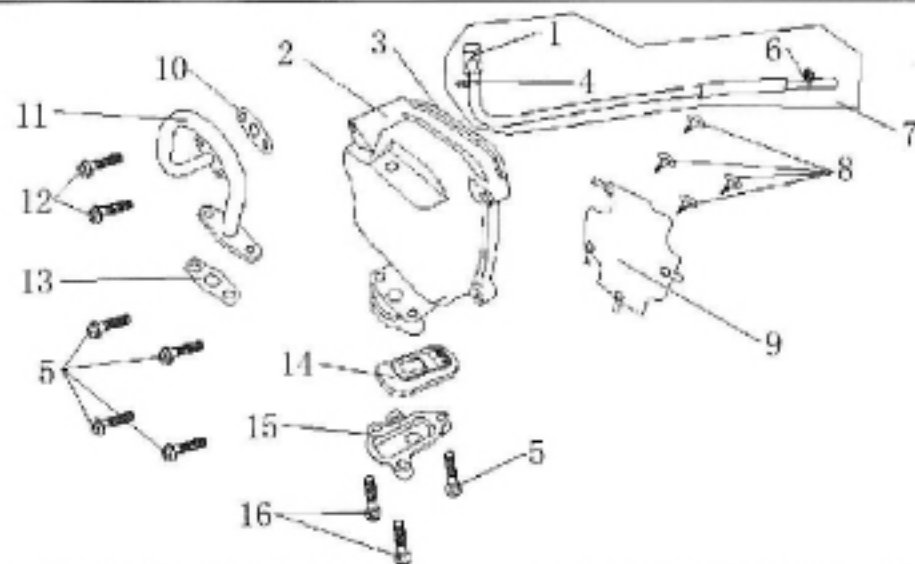
序号	名称及规格	物料编码	英文名称	数量
1	开口销	243029-001	PIN COTTER	2
2	开槽螺母	243028-002	SLOTTED NUT	2
3	平垫圈	906150-018	WASHER	2
4	后轮连接盘	243010-003	CONNECTOR PLATE	2
5	后桥锁紧螺母	243022-001	LOCKED NUT	2
6	后桥碟刹座	243016-001	SEAT REAR DISC BRAKE	1
7	后轮轴	243012-031	REAR WHEEL AXLE	1
8	链轮座	405101-001	SPROCKET WHEEL SET	1
9	后桥卡簧	243025-001	CLIP SPRING REAR AXLE	1
10	六角头带盘螺栓	906104-015	HEXANGULAR BOLT	4
11	轴用弹性挡圈	906153-011	SPRING WASHER SHAFT	1
12	碟刹支架	243017-001	DISC BRACKET, REAR	1
13	后桥油封	240901-001	OIL SEAL, REAR BRIDGE	2
14	后桥轴承	243011-001	BEARING, REAR AXLE	2
15	轴套	902005-042	BUSH SHAFT	1
16	轴承座	243018-024	BEARING SEAT	1
17	六角头螺母	906162-001	LOCK NUT HEXANGULAR	4
18	六角头带盘螺栓	906104-111	FLANGE BOLT	4



风扇盖.引擎罩盖 Fan Cover Shroud

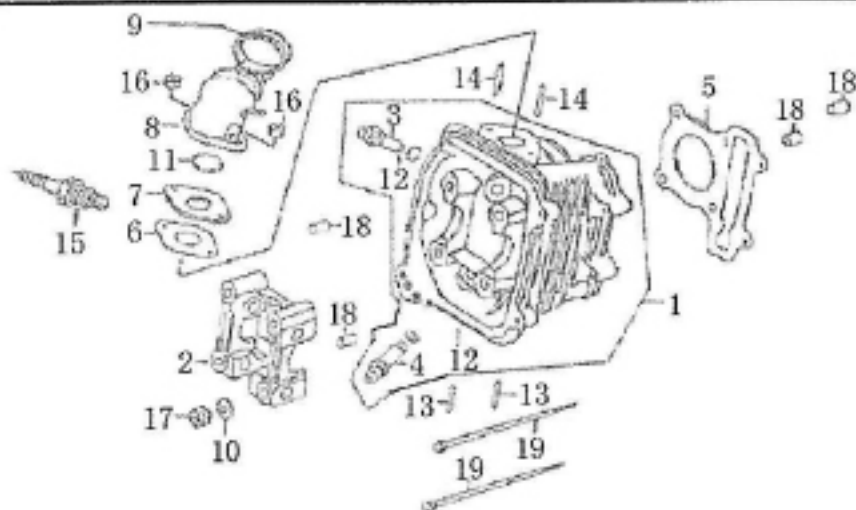
序号 No	件号 Part No	中文名称 Chinese	英文名称 Description	数量 Qty	备注 Remark
1	101418-001	通气管夹	CLAMPER BREATHER TUBE	1	
2	101419-001	冷却风扇盖	COVER CLAPPAN	1	
3	101421-001	起动机导线夹	CLAMPER STARTER CABLE	1	
4	101422-001	化油器冷却导管	DUCT CARBURETOR COOLING	1	
5	101423-001	罩盖A	SHROUDA	1	
6	101424-001	导盖	DUCT SHROUD	1	
7	101425-001	罩盖A油封	SEAL SHROUD A	1	
8	101426-001	罩盖B	SHROUD COMP B	1	
9	101405-009	高压线夹	CLIP HIGH TENSION CORD	1	
10	101427-001	罩盖B油封	SEAL SHROUD B	1	
11	101428-001	橡皮塞	CROMMET SIDE PANEL	1	
12	906176-030	螺钉ST5×12	SCREW TAPPING ST5×12	1	
13	906176-031	螺钉ST5×16	SCREW TAPPING ST5×16	4	
14	906104-111	螺栓M6×25	BOLTED FLANGE M6×25	3	
15	101114-005	溢油管夹	CLAMPER CABB DRAIN TUBE	1	
16	101429-001	橡皮塞(B)	CROMMET SEROUD (B)	1	





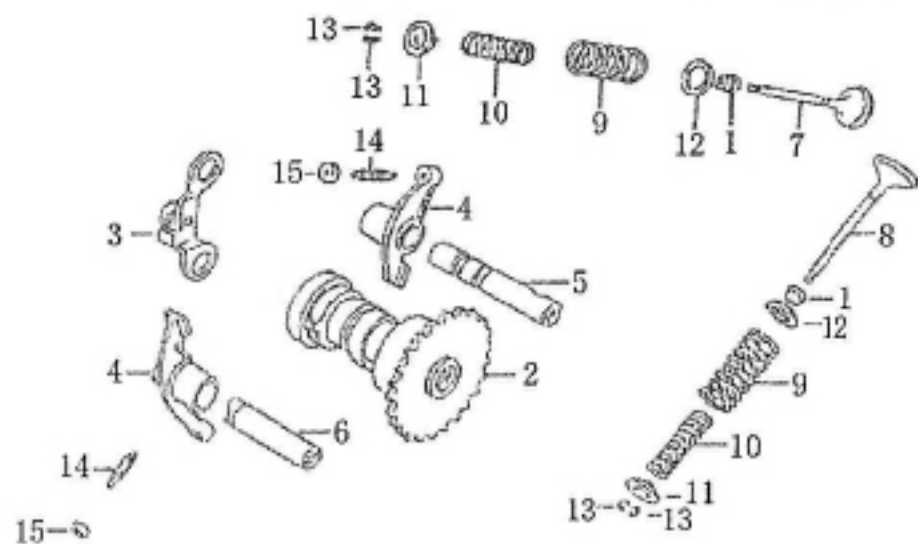
气缸头盖 Cylinder Head Cover

序号 No	件号 Part No	中文名称 Chinese	英文名称 Description	数量 Q'ty	备注 Remark
1	101201-004	通气咀	TUBE BREA TEHER	1	
2	102271-035	气缸头盖	COVER COMP CYLINDER HEAD	1	
3	102275-008	气缸头盖垫圈	CASKET HEAD COVER	1	
4	101203-006	通气管夹 (D8.5)	CLAMP TUBE (D8.5)	1	
5	906104 112	螺栓 M6×25	BOLTED FLANGE M6×25	5	
6	101203-007	通气管夹 (D12)	CLAMP TUBE (D12)	1	
7	101202-009	通气管组件	TUBE ASSY BREATHER	1	
8	906176-032	螺钉ST4×8	SCREW TAPPLNG ST4×8	4	
9	102227-002	通气压板	PLATEL COVER	1	
10	102231-001	通气阀管A垫片	CLAMP VALVE TUBE A MAP	1	
11	102232-001	通气阀管	CLAMP VALVE TUBE	1	
12	906104-121	螺栓 M6×18	BOLTED FLANGE M6×18	2	
13	102233-001	通气阀管B垫片	CLAMP VALVE TUBE B MAP	1	
14	102234-001	簧片阀组件	LANGUETTE VALVE ASSY	1	
15	102235-001	簧片阀座盖	LANGUETTE VALVE COVER	1	languette
16	906104-124	螺栓 M6×40	BOLTED FLANGE M6×40	2	

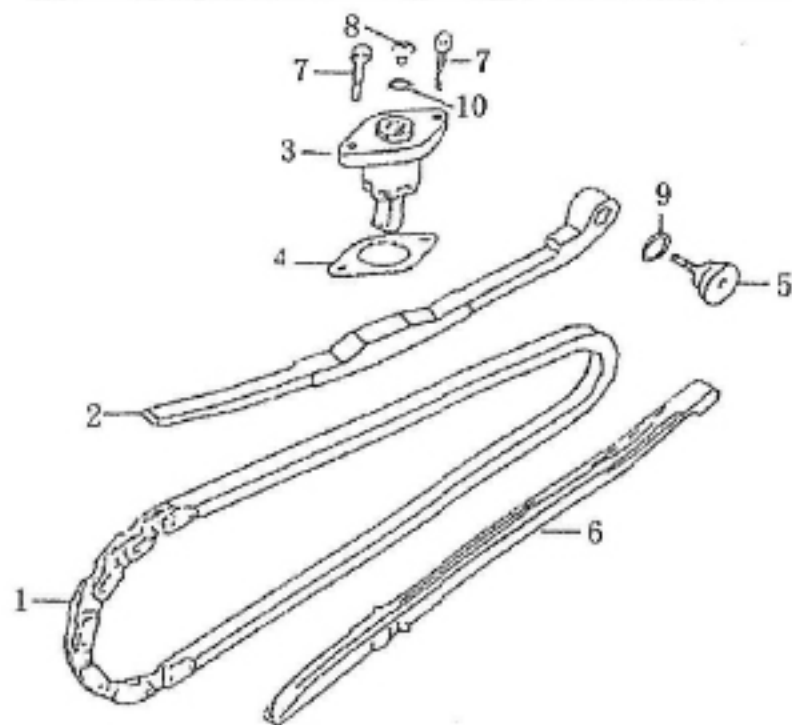


气缸头 Cylinder Head

序号 No	件号 Part No	中文名称 Chinese	英文名称 Description	数量 Q'ty	备注 Remark
1	102240-289	气缸头	HEAD COMP CYLINDER	1	
2	102228-001	凸轮轴固定座	HOLDER CAMSHAFT	1	
3	102244-010	进气阀导管	GUIDE IN VALVE	1	
4	102244-011	排气阀导管	GUIDE EXUALVE	1	
5	102230-035	气缸头垫片	GASKER CYLINDER HEAD	1	
6	118101-001	隔热板垫片	CASKER CARBURETOR INSULATOR	1	
7	118201-006	化油器隔热板	INSULATOR CARBURETOR	1	
8	100004-028	进气管	PIPE COMP IN	1	
9	118112-001	进气管夹	BAND IN SULATOR	1	
10	906150-015	垫圈8	WASHER 8	4	
11	118113-007	O形圈27×2.0	O-RING 27×2.0	1	
12	102245-001	O形圈9×1.6	O-RING 9×1.6	2	
13	102222-009	双头螺栓M6×32	BOLT 2 STUD M6×32	2	
14	118114-003	双头螺栓M6×60	BOLT 2 STUD M6×63	2	
15	102250-010	火花塞 (A7TC、A7RTC)	PLUG SPARK (A7TC、A7RTC)	1	
16	906161-013	螺母 M6	NUT M6	2	
17	906161-014	螺母 M8	NUT M8	4	
18	906184-001	定位销10×16	PIN DOWEL 10×16	4	
19	906104-113	螺栓M6×100	BOLTED FLANGE M6×100	2	

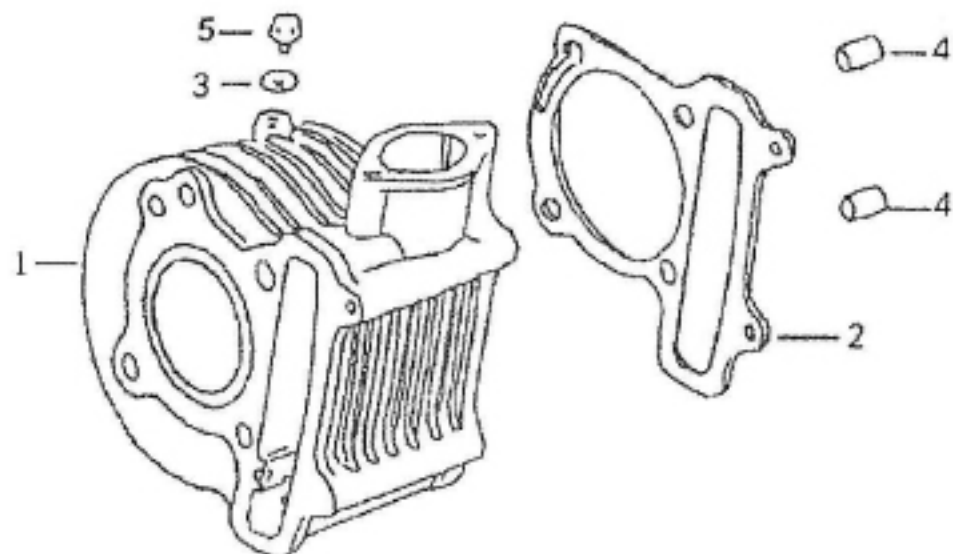


		凸轮轴、门阀		Camshaft、Valve	
序号	件号	中文名称	英文名称	数量	备注
No	Part No	Chinese	Description	Q'ty	Remark
1	104310-007	门阀油封	SEAL VALVE STEM	2	
2	104130-041	凸轮轴	CAMSHAFT COMP	1	
3	102260-002	止动板	PLATE COMP STOPPER	1	
4	104411-003	门阀摇臂	ARM VALVE ROCKER	2	
5	104413-008	进气阀摇臂轴	SHAFT COMP IN ROCKER APM	1	
6	104413-009	排气阀摇臂轴	SHAFT EX ROCKER	1	
7	104301-018	进气阀	VALVE IN	1	
8	104302-018	排气阀	VALVE EX	1	
9	104304-009	门阀外弹簧	SPRING VALVE OUTER	2	
10	104303-009	门阀内弹簧	SPRING VALVE INNER	2	
11	104307-007	门阀弹簧保持器	RETINER VALVE SPR'NG	2	
12	104306-005	弹簧座	SEAT VAVE SPRING OUTER	2	
13	104308-007	门阀锁扣	COTTER VELVE	4	
14	104415-003	挺杆调整螺栓	SCREW TAPPET ADJUSTING	2	
15	104416-003	调整螺栓固定螺母	NUT TAPPET ADJUSTING	2	



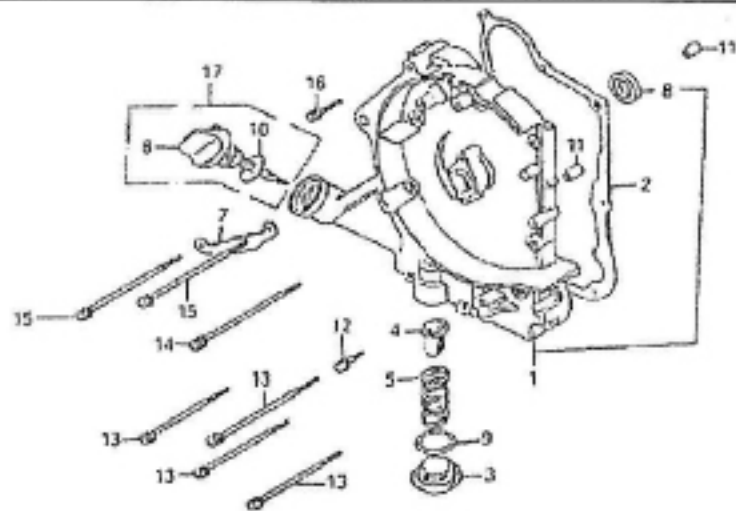
内链条、拉力杆 Cam Chain, Tensioner

序号 No	件号 Part No	中文名称 Chinese	英文名称 Description	数量 Q'ty	备注 Remark
1	104150-011	凸轮轴内链条	CHAIN CAM	1	
2	104201-009	链条拉力杆	TENSIONER CAM CHAIN	1	
3	104200-003	链条调整器	LIFTER ASSY TENSIOER	1	
4	104209-004	链条调整器垫片	GASKET TENSILNER LIFTER	1	
5	104225-001	拉力杆螺栓	PIVOT CAM CHAIN TENSIONER	1	
6	104202-009	链条导件	GUIDE COMP CAM CHAIN	1	
7	906104-114	螺栓 M6×22	BOLTED FLANGE M6×22	2	
8	906176-033	螺钉 M6×6	BOLTED FLANGE M6×6	1	
9	104226-001	O 型环15.5×1.5	O-RING 15.5×1.5	1	
10	104226-002	O 型环9.5×1.5	O-RING 9.5×1.5	1	



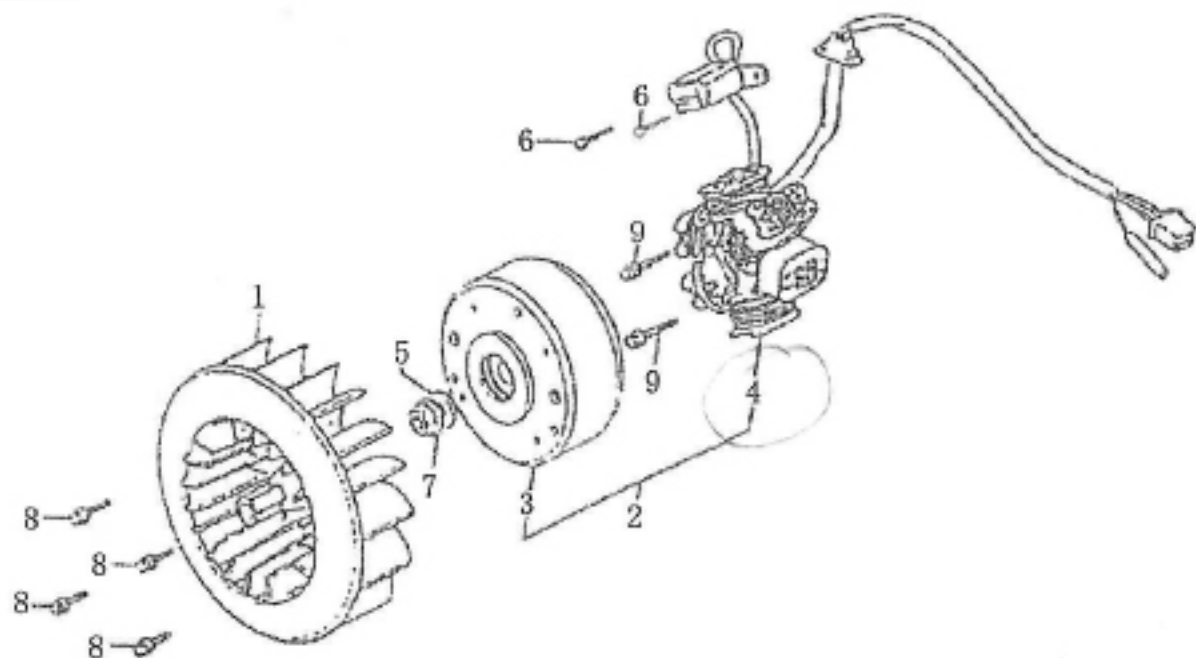
汽缸 Cylinder

序号 No	件号 Part No	中文名称 Chinese	英文名称 Description	数量 Q'ty	备注 Remark
1	102120-050	汽缸	CYLINDER COMP	1	
2	102108-023	汽缸垫片	GASKET CYINDER	1	
3	102124-001	止泄垫片	WASHER SEALNG	1	
4	906184-001	定位销10×16	PIN DOWEL 10×16	2	
5	906104-115	螺栓M6×12	BOLTED FLANGE M6×12	1	



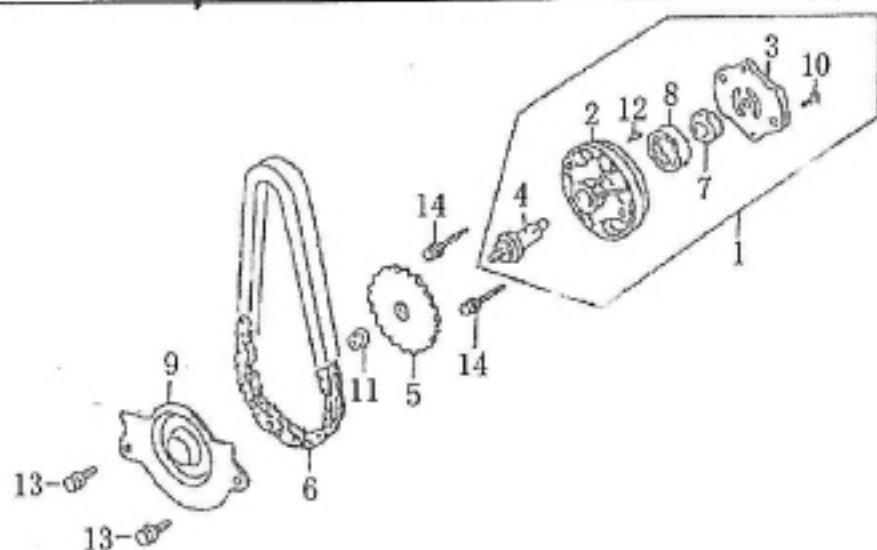
右曲轴箱盖 Right Crankcase

序号 No	件号 Part No	中文名称 Chinese	英文名称 Description	数量 Q'ty	备注 Remark
1	101401-280	右曲轴箱盖	COVER RCRANKCASE COEP		
2	101403-017	右曲轴箱盖垫片	GASKET RCRANKCASE COEP		
3	101117-006	滤油网螺母盖	CAP TAPPET ADJUSTING HOLE		
4	101130-005	滤油网	SCREEN OIL FILTER		
5	101116-006	滤油网弹簧	SPRING OIL FILTER SCREEN		
6	100016-005	机油尺	GAUGE OIL LEVEL		
7	101321-001	线夹	CLAMPER A.C. GENERATOR CORD		
8	101233-001	油封19.8×30×5	DIL SEAL 19.8×30×5		
9	101118-003	O型环30.8×3.1	O-RING 30.8×3.1		
10	101442-004	O型环18×3	O-RING 18×3		
11	906184-002	定位销8×14	PIN DWEL 8×14		
12	906104-116	螺栓 M6×32	BOLTED FLANGE M6×32		
13	906104-117	螺栓 M6×95	BOLTED FLANGE M6×95		
14	906104-118	螺栓 M6×100	BOLTED FLANGE M6×100		
15	906104-119	螺栓 M6×110	BOLTED FLANGE M6×110		
16	906104-120	螺栓 M6×40	BOLTED FLANGE M6×40		
17	101440-003	机油尺组件	GAUGE ASSY OIL		



发电机 Generator

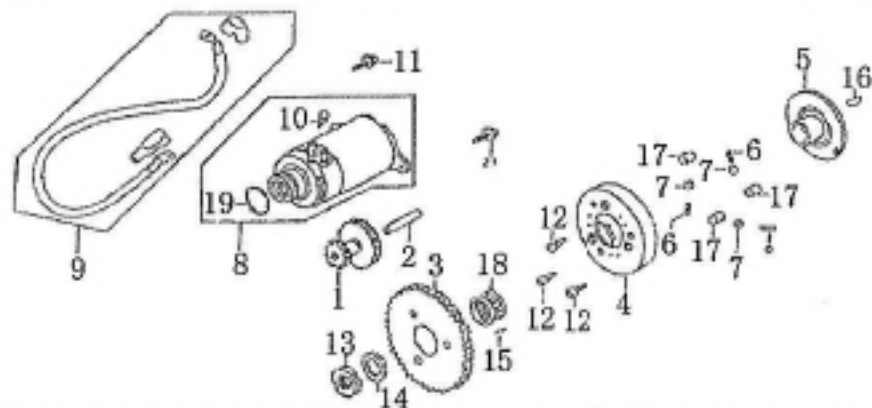
序号 No	件号 Part No	中文名称 Chinese	英文名称 Description	数量 Q'ty	备注 Remark
1	111101-001	冷却风扇	PANCOMP COOLING	1	
2	111000-037	交流发电机	GENERAATOR ASSY A. C.	1	
3	111100-025	飞轮	FLYWHEEL COMP	1	
4	111200-108	转子线圈	STATOK COMP	1	
5	906150-016	垫圈12	WASHER FLANGE 12	1	
6	906175-010	螺钉M5×12	BOLT M5×12	2	
7	906161-015	螺母 M12	NUT M12	1	
8	906104-121	螺栓 M6×18	BOLTED FLANGE M6×18	4	
9	906104-122	螺栓 M6×20	BOLTED FLANGE M6×20	2	



机油泵 Oil Pump

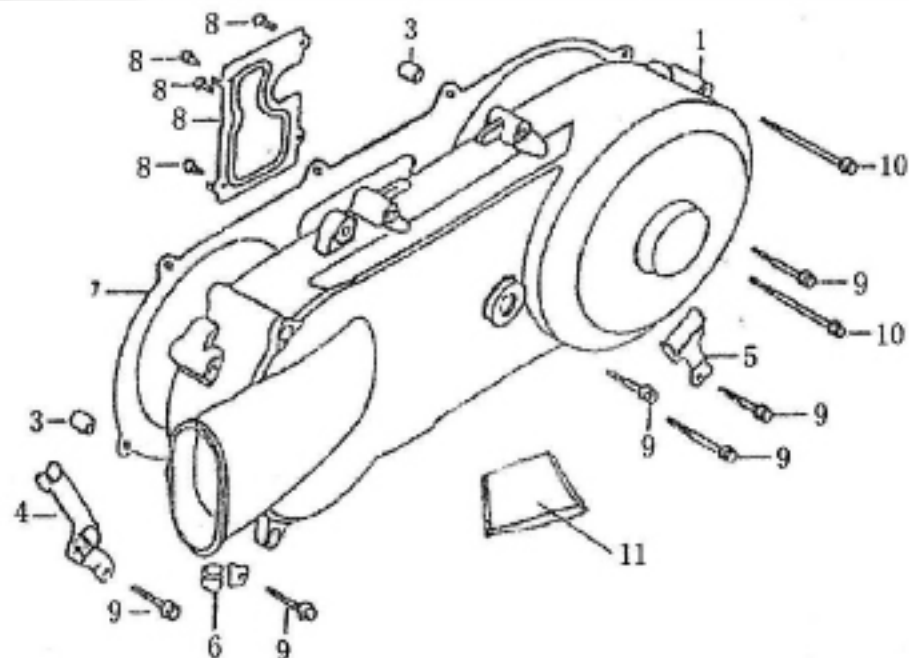
序号 No	件号 Part No	中文名称 Chinese	英文名称 Description	数量 Q'ty	备注 Remark
1	105110-028	机油泵	PUMP ASSY OIL	1	
2	105111-001	油泵本体	BODY OIL PUMP	1	
3	105117-001	平板	PLATE OIL PUMP	1	
4	105102-002	油泵轴	SHAFT OIL PUMP	1	
5	105101-005	机油泵驱动齿轮	SPROCKE TOIL PUMP DRIVEN	1	
6	105109-001	机油泵驱动链条	CHAIN OIL PUMP	1	
7	105112-001	油泵内转子	ROTOR OIL PUMP INNER	1	
8	105113-001	油泵外转子	ROTOR OIL PUMP OUTER	1	
9	105119-001	机油分隔板	SEPARTOR OIL	1	
10	906175-011	螺钉 M3×10	SCREW PAN M3×10	1	
11	906161-016	螺母 M6	NUT M6	1	
12	906184-003	定位销 4×6.5	PIN DOWEL 4×6.5	1	
13	906104-115	螺栓 M6×12	BOLTED FLANGE M6×12	2	
14	906104-112	螺栓 M6×25	BOLTED FLANGE M6×25	2	





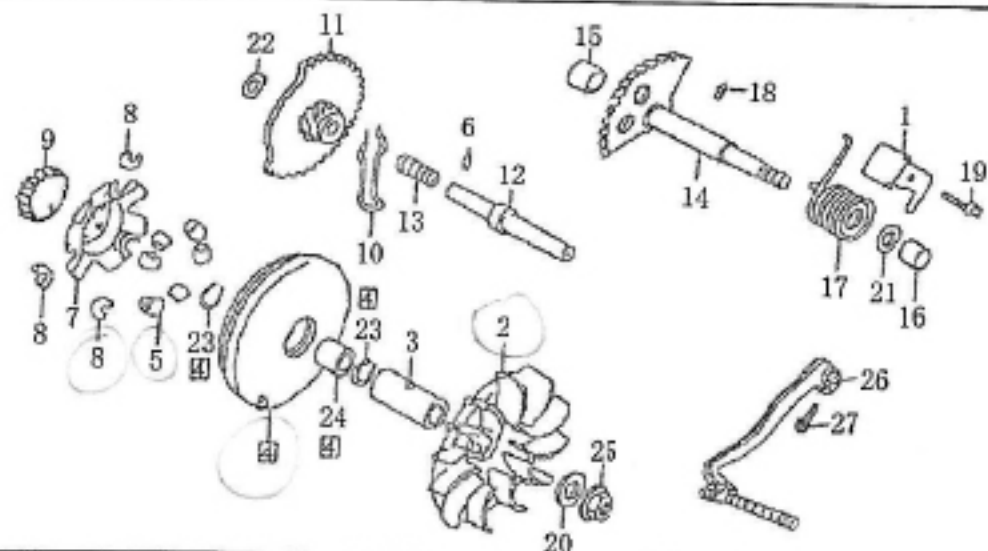
起动电机 Starting Motor

序号 No	件号 Part No	中文名称 Chinese	英文名称 Description	数量 Qty	备注 Remark
1	109231-002	起动减速齿轮	GEAR STAER EDUCTION	1	
2	109221-002	起动减速齿轮轴	SHAFT STARTER REDUCTION GEAR	1	
3	109211-003	起动离合器齿轮	GEAR COMP STARTING CLUTCH	1	
4	109112-001	离合器外套	OUTER COMP STARTING	1	
5	109111-001	起动离合器凸缘	FLANGE STARTING CLUTCH	1	
6	109101-001	滚子弹簧	PRING STARTING CLUTCH ROLLER	3	
7	109102-001	滚子弹簧盖	CAP STARING CLUTCH ROLLER SPRING	3	
8	112000-106	起动马达	MOTOR ASSY STARTER	1	
9	112001-007	起动马达导线	CABLE STARTER MOTOR	1	
10	906175-012	螺钉 M5×8	SCREW PAN M5×8	1	
11	906104-123	螺栓 M6×16	BOLTED FLANGE M6×16	1	
12	906105-003	内六角螺栓M6×12	BOLT SOCKET M6×12	3	
13	906162-010	锁紧螺母 M22×1	NUT LOCK M22×1	1	
14	906150-017	垫圈 18×31×1	WASHER THRUST 18×31×1	1	
15	906184-004	定位销 5×6	PIN DOWEL 5×6	1	
16	109104-001	固定键	KEY WOODRUFF	1	
17	109114-001	滚子 10×10	ROLLER 10×10	3	
18	212211-003	滚针轴承28×37×17	BEARING NEEDLE 28×37×17	1	
19	112004-002	O 型环	O-RINB	1	
20	906175-012	螺钉 M5×8	SCREW PAN M5×8	1	
21	906104-123	螺栓 M6×16	BOLTED FLANGE M6×16	1	



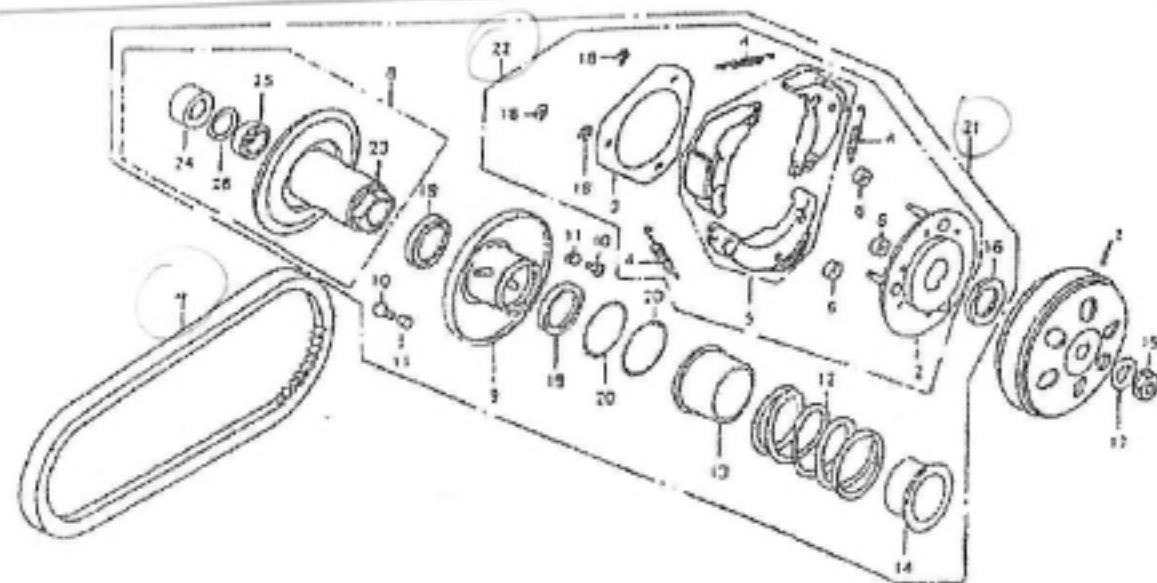
左曲轴箱盖 Left Crankcase Cover

序号 No	件号 Part No	中文名称 Chinese	英文名称 Description	数量 Q'ty	备注 Remark
1	101301-218	左曲轴箱盖	LEFT CRANKCASE COVER	1	
2	101322-001	通气导板	PLATEL COVER	1	
3	906184-002	定位销 8×14	PIN DOWEL 8×14	2	
4	101323-001	节流导线夹	CLAMPER THROTTLE CABLE	1	
5	101324-001	刹车导线夹	CLAMPER BRAKE TUBE	1	
6	101114-005	溢油管夹	CLAMPER BREATHER DRAIN TUBE	1	
7	101304-013	左曲轴箱盖垫片	LEFT CRANKCASE COVER WASHER	1	
8	906176-032	螺钉 ST4×8	SCREW PAN ST4×8	4	
9	906104-124	螺栓 M6×40	BOLTED FLANGE M6×40	6	
10	906104-126	螺栓 M6×65	BOLTED FLANGE M6×65	2	
11	101325-001	主脚架固定板	REAR BRAKE TREAD	1	



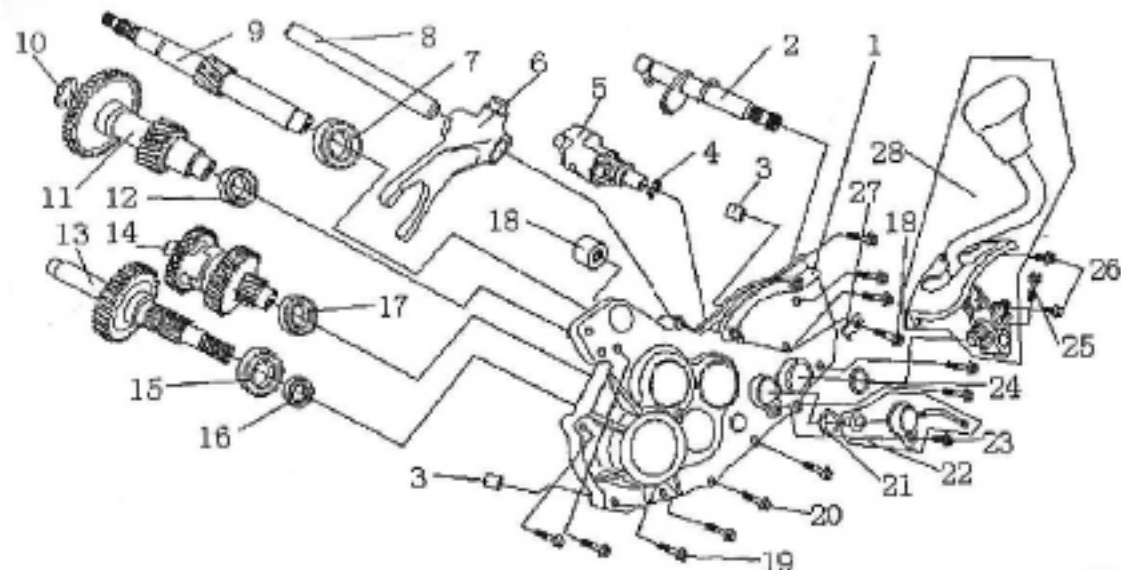
驱动皮带轮 Drive Pulley

序号 No	件号 Part No	中文名称 Chinese	英文名称 Description	数量 Q'ty	备注 Remark
1	109315-001	起动杆回位制动板	PLAE KIKKRE TURNSTOPPER	1	
2	109316-001	驱动板带叶盘	FACE DRIVE	1	
3	109317-001	衬套	BOSS DRIVE FACE	1	
4	109318-001	滑动式驱动盘	FACE COMP MOVABLE DRIVE	1	
5	109319-001	配动滚子	ROLLER SETWEIGHT	6	
6	109323-001	滚针 3×8.5	ROLLER 3×8.5	1	
7	109324-001	斜坡板	PLATE RAMP	1	
8	109325-001	斜坡板边件	PLECE SLIDE	3	
9	107121-001	起动从动齿轮	GEAR KICK DDRIVEN	1	
10	109306-004	起动磨擦弹簧	SPPING STARTER GEAR FRICTION	1	
11	109326-001	起动惰齿轮	GEAR COMP STARTER IDLE	1	
12	109327-001	起动惰齿轮轴	SHAFT STARTER IDLE	1	
13	109328-001	驱动轴弹簧	SPRINIE STARTER IDLE	1	
14	109300-017	起动轴	SPRINIE COMP KICK STARTER	1	
15	109329-002	衬套 12×16×12	BUSH 12×16×12	1	
16	109329-001	起动轴衬套	BUSH KICK SPINLE	1	



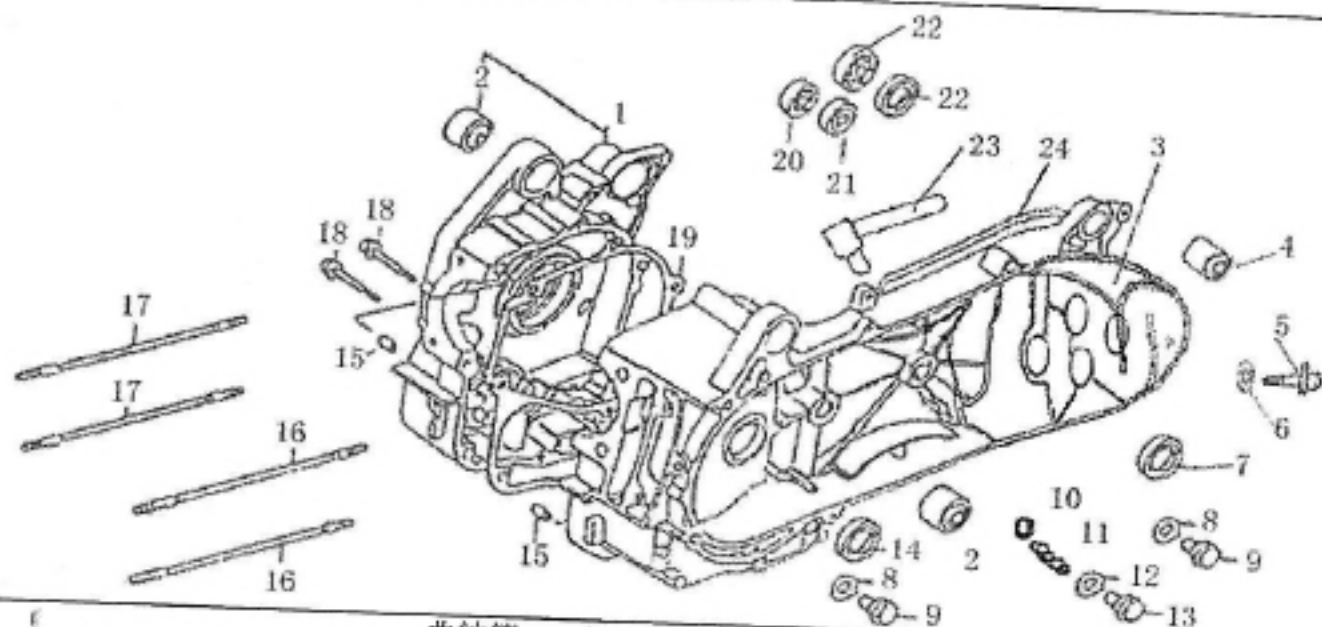
传动皮带轮 Driven Pulley

序号 No	件号 Part No	中文名称 Chinese	英文名称 Description	数量 Q'ty	备注 Remark
1	106262-003	离合器外套 743-20	OUTER CLUTCH	1	
2	106211-001	驱动板	PLATE COMP DRIVE	1	
3	106212-001	离合器边板	PLATE CLUTCH SIDE	1	
4	106247-006	离合器弹簧	SPRING CLUTCH	3	
5	106271-001	离合器配重组	WEICH SET CLUTCH	1	
6	106263-001	离合器防震橡胶	RUBBER CLUTCH	3	
7	106005-002	驱动皮带	BELT DIVE	1	
8	106030-001	从动皮带盘组件	FACE ASSY DRIVEN	1	
9	106031-001	滑动式从动皮带盘	FACE COMP MOVABLE DRIVEN	1	
10	106032-001	滚导销	PIN ROLLER GUIDE	3	
11	106033-001	滚子	ROLLER GUIDE	3	
12	106034-001	驱动弹簧	SPRING DRIVEN PACE	1	
13	106035-001	油封套筒	COLLAR SEAL	1	
14	106036-001	套筒	COLLAR SPRING	1	

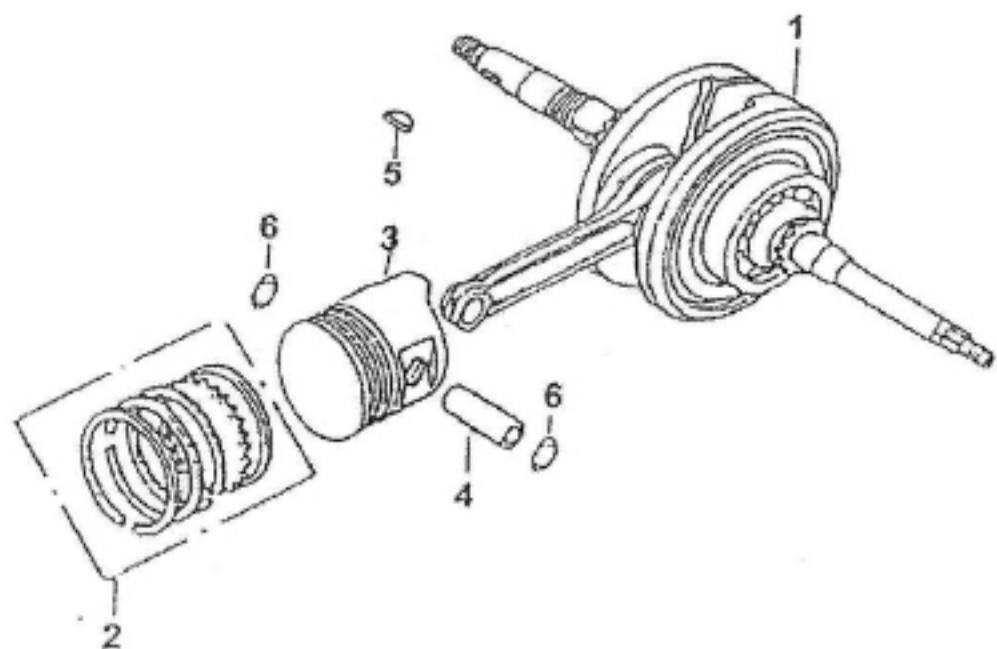


传动系 Transmission

序号 No	件号 Part No	中文名称 Chinese	英文名称 Description	数量 Q'ty	备注 Remark
1	107308-001	齿轮室盖	COVER MISSION ASSY	1	
2	108200-019	变档轴组件	CHANGE WAY AXES ASSY	1	
3	906184-002	定位销 8×14	PIN DOWEL 8×14	2	
4	906150-021	垫片 14×24×1	WASHER DRAIN PLUG 14×24×1	1	
5	108110-036	变档鼓组件	CHANGE WAY DRUM ASSY	1	
6	108121-003	拨叉	CHANGE WAY FORK	1	
7	902012-012	轴承 6203	BEARING RADIAL BALL 6203	1	
8	108126-005	拨叉轴	CHANGE WAY AXES	1	
9	107311-001	驱动轴	SHAFT DRIVE	1	
10	906150-022	垫片 17×26×2	WASHER DRAIN PLUG 17×26×2	1	
11	107312-001	中间轴组件	MIDDLE AXES ASSY	1	
12	902012-015	轴承 6202	BEARING RADIAL BALL 6202	1	
13	107360-002	输出轴组件	SHAFT FINAL ASSY	1	
14	107340-004	变档齿轮组件	CHANGE WAY GEAR ASSY	1	
15	101233-003	油封 32×52×7	OIL SEAL 32×52×7	1	



曲轴箱 Crankcase					
序号 No	件号 Part No	中文名称 Chinese	英文名称 Description	数量 Q'ty	备注 Remark
1	101220-095	右曲轴箱组件	CRANKCASE ASSY R	1	
2	101223-001	引擎吊架橡胶衬套	BUSH ENGINE HANGER RUBBER	2	
3	101140-263	左曲轴箱组件	CRANKCASE ASSY L	1	
4	101225-001	后缓冲器下端衬套	BUSH RR CUSHION UNDER BUBBER	1	
5	107235-001	特殊螺栓	BOLT SPECIAL	1	
6	906150-050	垫圈 8	WASHER 8	1	
7	107230-011	油封 20×32×6	OIL SEAL 20×32×6	1	
8	101206-002	放油螺栓	BOLT DRAINPLUG	2	
9	906150-018	垫圈 12	WASHER DRAIN PLUG 12	2	
10	101137-001	定位钢球 9.5	GO TO STEEL BALL 9.5	1	
11	101138-001	定位螺栓弹簧	GO TO BOLT SPRING	1	
12	101139-001	定位螺栓垫圈	GO TO BOLT WASHER	1	
13	101120-001	定位螺栓	GO TO BOLT	1	
14	101233-001	油封 19.8×30×5	OIL SEAL 19.8×30×5	1	



曲轴、活塞 Crankshaft、Piston

序号 No	件号 Part No	中文名称 Chinese	英文名称 Description	数量 Q'ty	备注 Remark
1	103200-069	曲轴	CRANKSHAFT COMP	1	
2	103120-029	活塞环组件	RING SET PISTON (STD)	1	
3	103101-036	活塞	PISTON (STD)	1	
4	103102-015	活塞销	PIN PISTON	1	
5	103203-006	固定键 25×14×4	KEY WOODRUFF 25×14×4	1	
6	103103-011	活塞销夹	CLIP PISTON PIN	2	